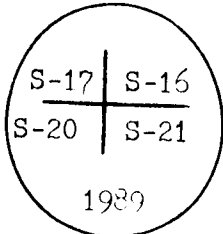


CERTIFIED LAND CORNER RECORDATION

'89 MAY 8 PM 4 39

DESCRIPTION OF CORNER EVIDENCE FOUND, AND ORIGINAL RECORD (If known)



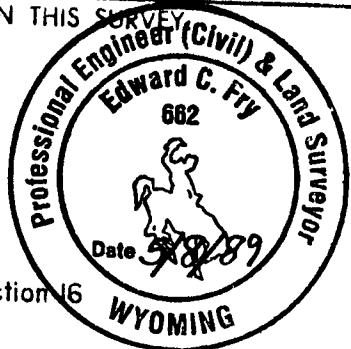
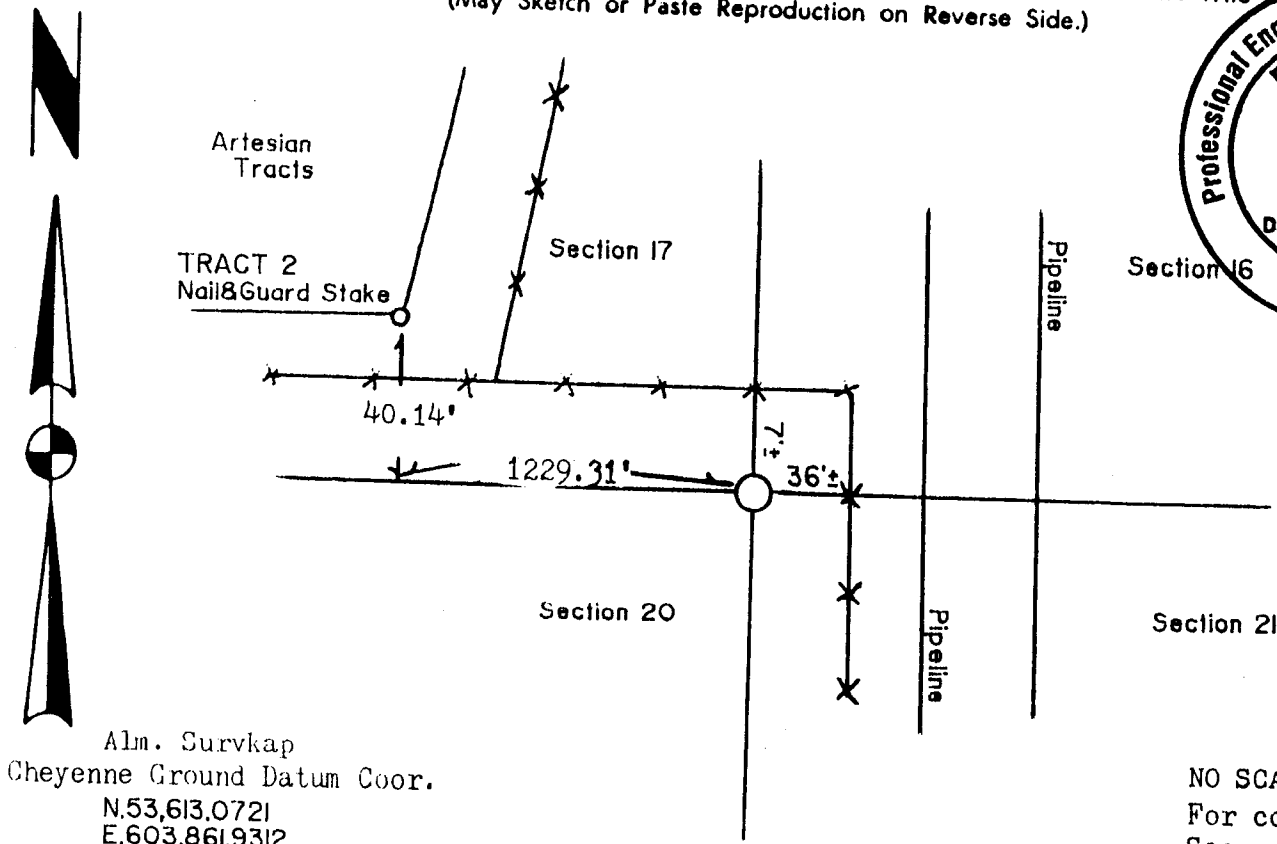
Found a iron pipe corner. The G.L.O. monument is described as a granite boulder 20"x10"x7" set in the year 1870.

T 13 N R 66 W

DESCRIPTION OF MONUMENT AND ACCESSORIES ESTABLISHED TO PERPETUATE THE ORIGINAL LOCATION OF THIS CORNER:

Set a 2"x24" O.D. galvanized iron pipe with a aluminum survkap with section numbers stamped on it 4" above the ground. Set corner over the top of iron pipe corner found.

SKETCH, WITH COURSE AND DISTANCE TO ADJACENT CORNER IF DETERMINED IN THIS SURVEY (May Sketch or Paste Reproduction on Reverse Side.)



Alm. Survkap  
Cheyenne Ground Datum Coor.  
N.53,613.0721  
E.603,861.9312

NO SCALE  
For corner ties  
See reverse side  
Field Survey  
April May 1989

I, Edward C. Fry certify that I have carefully ~~performed~~ reviewed the work done on the diagrammed corner as reported on this recordation form and approve the same.

Edward C. Fry P.E./L.S. #662  
Signature of Surveyor

Registration No.

STATE OF WYOMING,  
Office of Clerk and Recorder,  
County of \_\_\_\_\_

This "corner record" was filed for record on the \_\_\_\_\_ day of \_\_\_\_\_, 19\_\_\_\_, was noted on the cross-index plat and is assigned page No. \_\_\_\_\_, in book No. \_\_\_\_\_.

County Official			
Cross Index No. <u>11-9</u>	T. <u>13</u>	R. <u>66</u>	Mer.
_____	T. _____	R. _____	Mer.
_____	T. _____	R. _____	Mer.
_____	T. _____	R. _____	Mer.
_____	T. _____	R. _____	Mer.
_____	T. _____	R. _____	Mer.
_____	T. _____	R. _____	Mer.

